

Tessuti / Fabrics

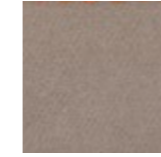
Tessuti / Fabrics

CATEGORIA EXTRA / CLASS EXTRA

Raso di seta / Silk satin



Blu Marine /
Blue Marine



Fango



Madreperla / Pearl



Malva / Mauve

Plissé seta a mano / Hand-made silk plissé



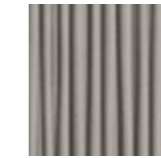
Avorio / Ivory



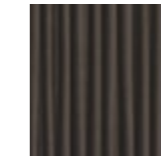
Bianco / White



Fumo di Londra /
London smoke



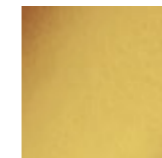
Grigio / Grey



Tabacco / Tobacco

CATEGORIA A / CLASS A

Seta / Silk



Ambra / Amber



Avorio / Ivory



Bianco / White



Nero / Black

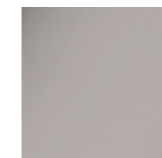


Rosso / Red



Tabacco / Tobacco

Net



Perla / Pearl

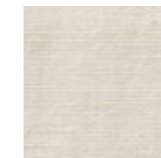


Avorio / Ivory

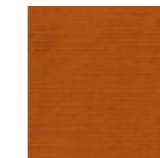
Lino / Linen



Bianco / White



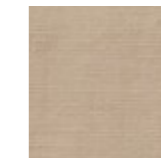
Grezzo /
Unbleached



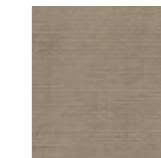
Melone



Nero / Black

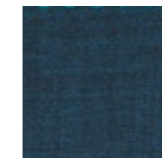


Sabbia / Sand

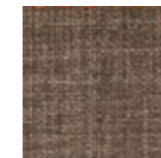


Tortora

Linone / Lawn



Blu Denim /
Blue Denim



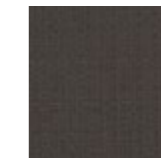
Cocco / Coco



Corda / Cord



Melograno /
Pomegranate



Tabacco / Tobacco



Verde Lime /
Lime green

Tessuti / Fabrics

Tessuti / Fabrics

CATEGORIA B / CLASS B

Cotone / Cotton



Amaranto /
Reddish purple



Beige



Bianco / White



Marrone / Brown



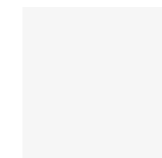
Verde bottiglia /
Bottle green

Pergamena / Parchment



Bianco / White

PVC per chiusure parziali / PVC for partial bottom closure



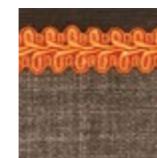
Bianco / White

CATEGORIA CLUB HOUSE / CLASS CLUB HOUSE

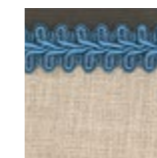
Linone / Lawn



Blu Denim /
Blue Denim



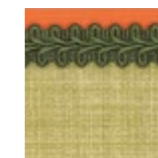
Cocco / Coco



Corda / Cord



Melograno /
Pomegranate



Verde Lime /
Lime green

Cavo elettrico in cotone colorato / Electrical cable in cotton colour



Blu / Blue



Arancio / Orange



Turchese / Turquoise



Turchese / Turquoise

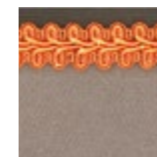


Arancio / Orange

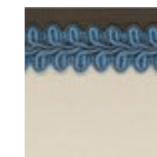
Raso di seta / Silk satin



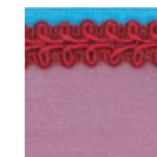
Blu Marine /
Blue Marine



Fango



Madreperla / Pearl



Malva / Mauve

Cavo elettrico in cotone colorato / Electrical cable in cotton colour



Blu / Blue



Arancio / Orange



Turchese / Turquoise



Turchese / Turquoise